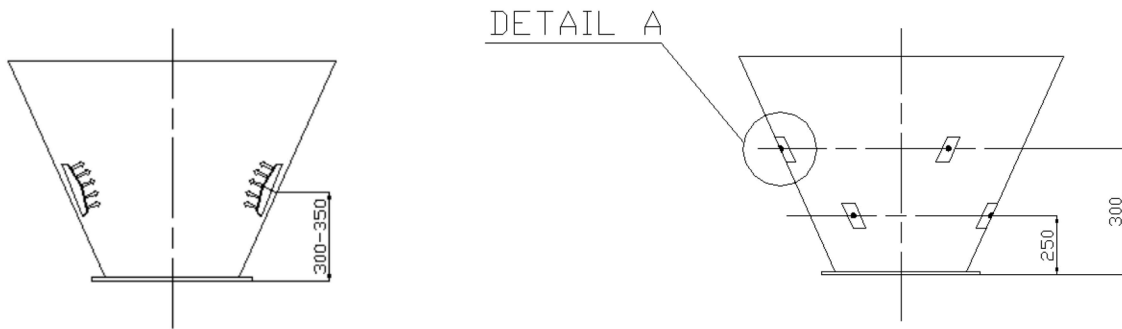


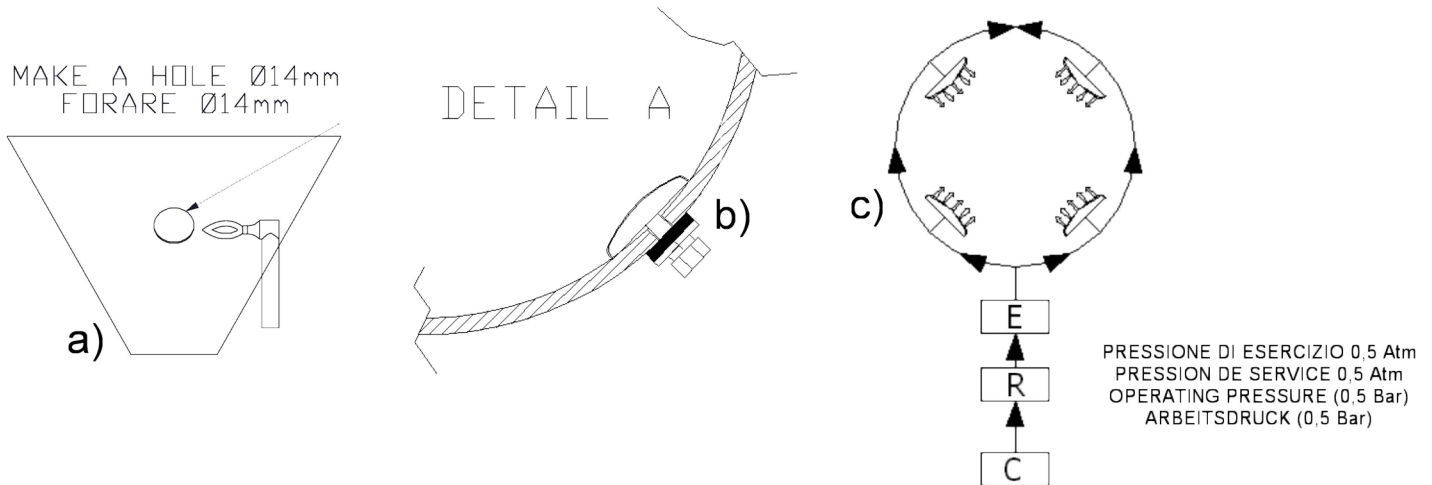
**PIASTRE DI FLUIDIFICAZIONE  
FLUIDSATON PADS  
LUFTAUFLOCKERUNGSKISSEN  
PLAQUES DE FLUIDIFICATION**

# I100

**POSITION - POSIZIONAMENTO**



**INSTALLATION STEP - FASI DI INSTALLAZIONE**



**C= Compressor**  
Kompressor  
Compresseur  
Comprssore

**E= Electropneumatic valve for automatic operation**  
Elektroventil für fernbetrieb  
Electrovanne pour commande à distance  
Elettrovalvola per comando a distanza

**P= Pad type I100 (100 cm<sup>2</sup> pad surface)**  
Platte typ I100(100 cm<sup>2</sup> Plattenfläche)  
Plaque type I100  
Piastra tipo I100

**R= Pressure regulator with condenser**  
Druckminderer mit Kondensator  
Réducteur de pression avec condensateur  
Riduttore di pressione con condensatore

1. PAD, CORPS DE PLAQUE  
PLATTENKORPER, CORPO PIASTRA
2. RUBBER SEAL, GUARNITURE EN GOMME,  
GUMMIDICHTUNG, GUARNIZIONE IN GOMMA
3. METAL WASHER, RONDELLE METALLIQUE,  
METALLUNIERLEGSCHIBE,  
RONDELLA METALLICA
4. FASTENING SCREW, VIS D'ATTELAGE,  
HALTESCHRAUBE, VITE D'ATTACCO

